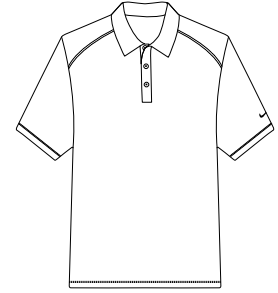
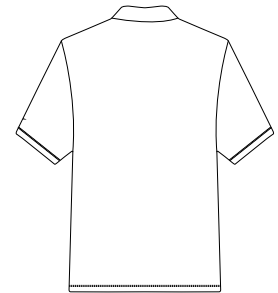


# Dri-FIT Classic Sport Shirt

NIKE GOLF 



Front



Back

**267020**

Nike has engineered a sport shirt that takes comfort to the next level. The Dri-FIT fabric gives superior moisture management, while the stitch-trimmed shoulder panels and gussets make a distinctive difference. Designed with a rib knit collar, three-button placket and open sleeves. The contrast Swoosh design trademark is embroidered on the left sleeve. Made of 4.7-ounce, 100% polyester Dri-FIT fabric. Pearlized buttons are selected to complement the shirt color.

**Care Instructions:**

Machine wash cold, inside out, with like colors. Do not use softeners. Do not bleach. Tumble Dry low. Do not iron. Do not dry clean.

**Finished Measurements in Inches**

Size	XS	S	M	L	XL	2XL	3XL	4XL	5XL
Width	19	20.5	22	23.5	25	26.5	28	29.5	31
Length	27.5	28.5	29.5	30.5	32	33.5	35	36.5	38
Sleeve	19.25	20	20.75	21.5	22	22.5	23	23.5	24

Chest width measured 1" below arm hole. Body length measured from back neck seam to hem. Shoulder width measured from arm hole seam to seam. Sleeve length measured from center back neck seam to hem. Collar measured from center front to center back on seam.

**Colors**

	Vivid Green
	Skyline Blue
	French Blue
	Varsity Red
	Midnight Navy
	White
	Black

**Please Note:**

Colors shown are approximate and for reference only. For closest match see PMS colors, or for exact match, returnable samples and grommeted samples are available.

**Color Chart**

Colors	Vivid Green	Skyline Blue	French Blue	Varsity Red	Midnight Navy	White	Black
Textile PMS	No Match	No Match	No Match	No Match	No Match	No Match	No Match
General PMS	381 C	7454 C	654 C	704 C	2767 C	No Match	Process Black C